

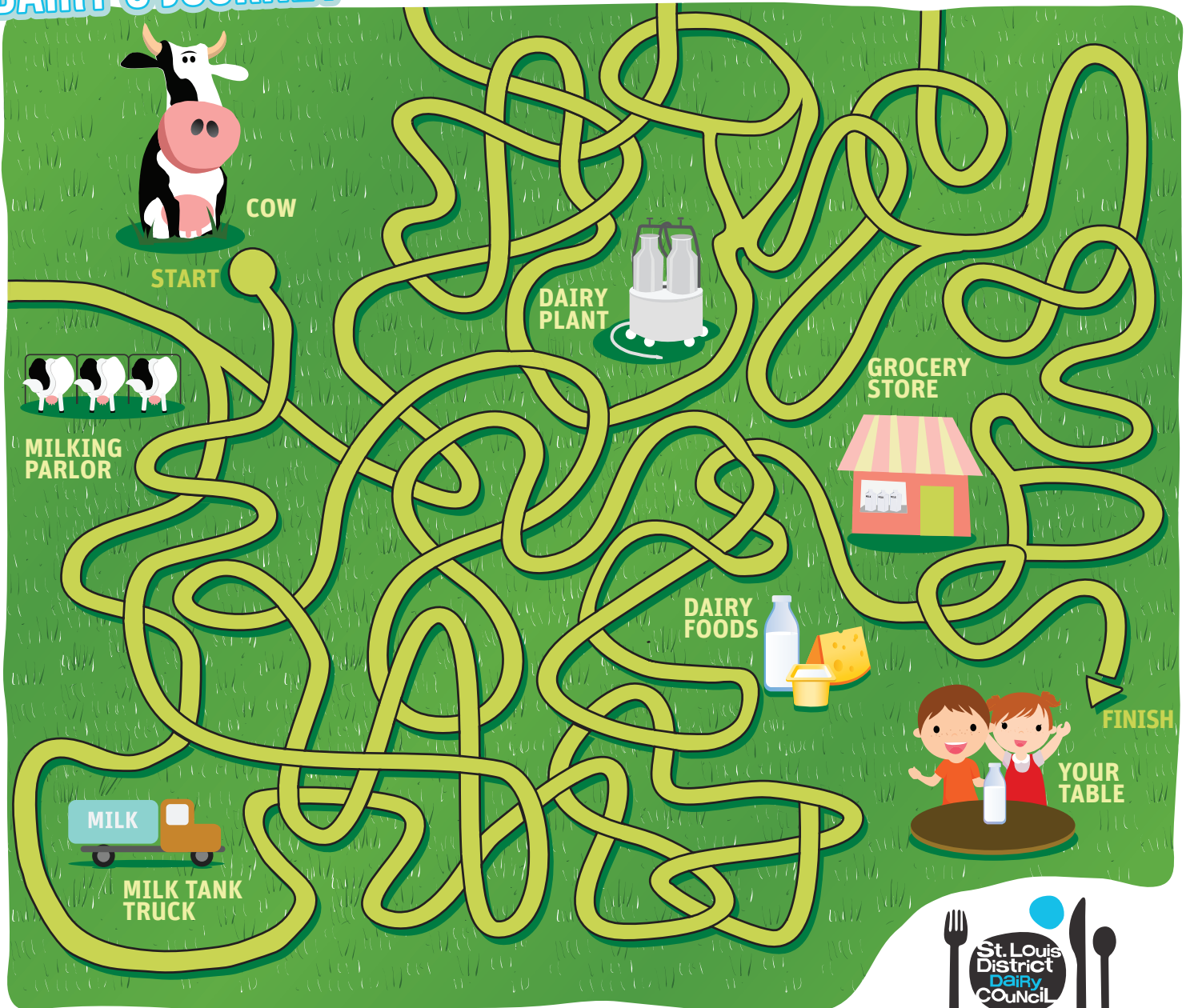
FROM YOUR LOCAL FARMER

TO YOU

Calves, cows, and the story of the dairy.

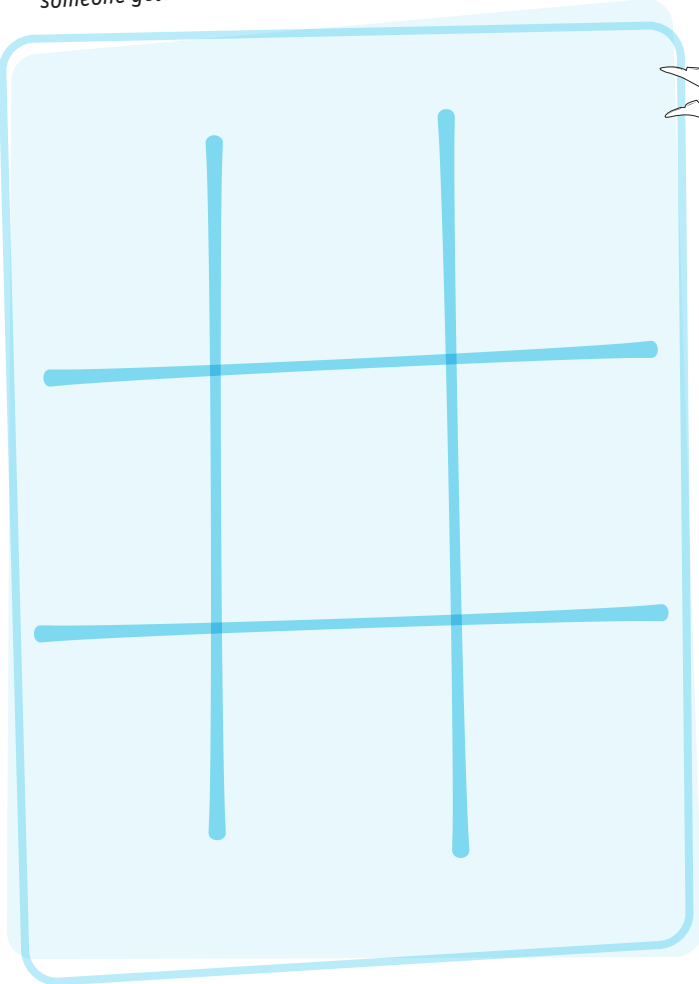
DAIRY'S JOURNEY

It takes a lot of work to get dairy from cows to you. Travel through the maze and see all the steps it takes!



TIC-TAC-TOE

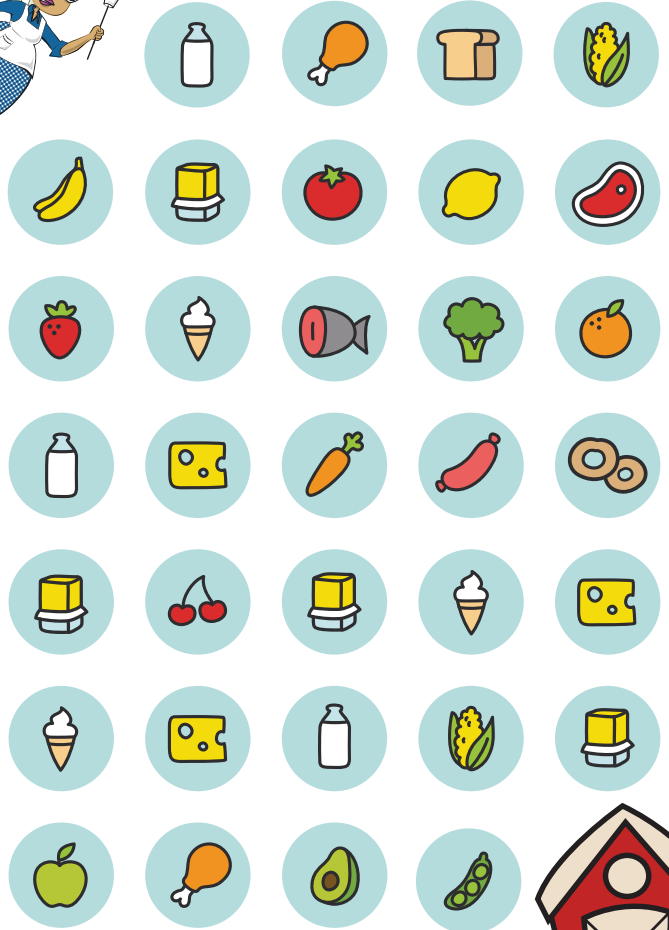
Start with an X and let your partner start with an O, taking turns filling the boxes until someone gets three-of-a-kind in a row!



A DAIRY-DELICIOUS ADVENTURE



Help the Dairy Godmother find her way to the dairy farm! Create a path from her to the farm by connecting the dairy foods that are next to one another.



SPOT THE DIFFERENCE

Spot up to 10 differences between the two dairy farm pictures below. Circle each one you find!



HINTS: 1) Bell 2) Hay Bale 3) Cow Smile 4) Flower 5) Switching Places 6) Camera 7) Cow Spot 8) Milk Pail 9) Hair Bow 10) Horns